

# ECONOMIC ACTIVITIES

## There are two economic areas in Italy:

This area is more industrialized and more developed

Milan, it is an important financial centre

This area is dominated by the private companies

This area is more agricultural and less developed



# In Italy, the main financial sectors are:

The tourism

The fashion

The engineering

The chemical products

The car industry

The food

# Italian primary sector:

Agriculture

Forestry exploitation

Cattle raising

Fishing

Mining

# PEOPLE SURVEY

# QUESTIONS

- **What is a volcano?**

It is a geological structure by which magma emerges.

- **What is magma?**

Those of molten rocks inside the Earth.

- **What is the IEV?**

Is the Volcanic Explosive Index. Measure the explosiveness of the eruption to know how strong it is.

- **What are the differences between an active and an inactive volcano?**

An inactive volcano is one that has not erupted for a thousand of years. The active volcano is the one that has erupted within the last hundred years.

- **What temperature can the lava of a volcano reach?**

The lava erupts at about 1200 degrees Celsius.

- **What is the ash of a volcano?**

It is part of the material that is expelled by a volcano when it erupts, they are small particles of rock.

# Etna, Vulcano and Stromboli



# Important volcanoes in Sicily



Stromboli



Etna



Vulcano

# Etna

**Localitation:** it is on the east coast of Sicily, Italy.

It is currently 3,326 m **high**. It is the highest peak in Italy south of the Alps.

Mount Etna is one of the world's most **active** volcanoes and is in an almost constant state of activity.

## ERUPTIONS

1971	2007
1981	2008
1991-1993	2012
2002-2003	2018



# Vulcano

**Localitation:** about 25 km north of Sicily

**Altitude:** 501 msnm

The volcanic activity of the region is due to the drift towards the north of the African plate in contact with the Eurasian plate.

In the north of the island is Vulcanello, 123 meters high, and is connected to the rest of it by an isthmus that is flooded.



The fumaroles located in several places of the island prove that the volcanic activity is not extinguished.

# Stromboli

It is a small Italian **island** in the Tyrrhenian Sea, whose main characteristic is that of the emerged top of the active volcano of the same name.

The Stromboli volcano rises 924 m above sea level, 2 but actually has an **altitude** of 2,000 m above the ocean floor. There are three active craters on the summit. A significant geological feature of the volcano is the Sciara del Fuoco

The last violent eruption occurred in 1930 and since then it has been under permanent surveillance. The last eruption began on February 28, 2007.

The explosions of fire and lava are repeated rhythmically every 20 minutes, and as a prologue to each eruption a powerful roar is heard, the ground trembles and finally the flashes emerge.

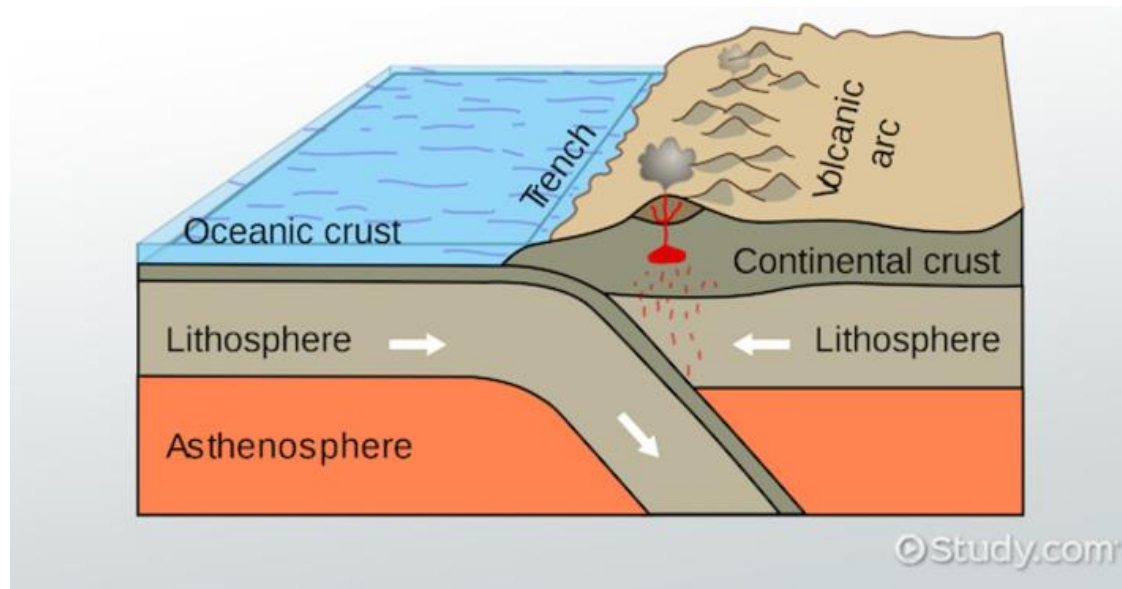


# How they have formed?

- ▶ They are located on the edge of a subduction zone, where the African plate is sinking under the Eurasian Plate for approximately 100 million years. As the material inside sinks, it melts, but due to its high temperature, it reaches a point where it tends to rise and come out to the surface of the earth.



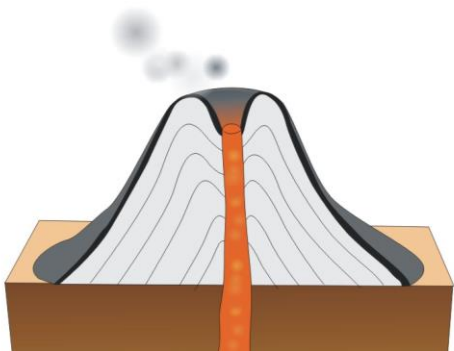
- ▶ Subduction is called the process by which the lower part of the crust is classified, individualized in a lithospheric plate, submerged in another continental plate.



# What type of volcanoes they are?

**ETNA:**

Stratovolcano



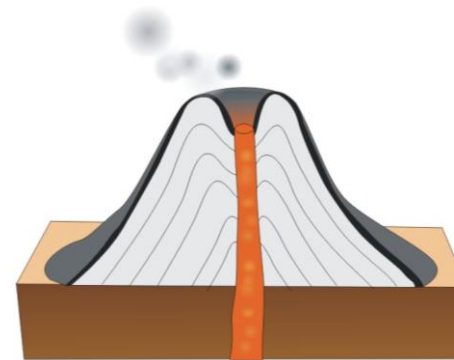
**VULCANO:**

Volcanic complex



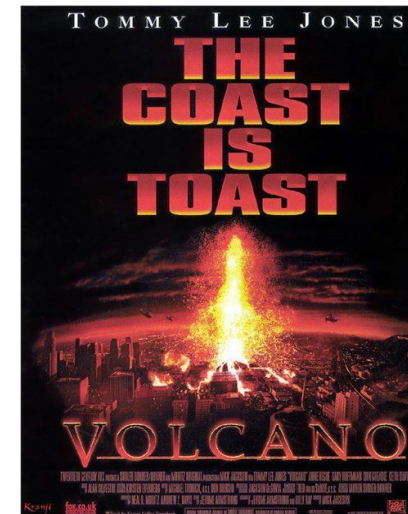
**STROMBOLI:**

Stratovolcano



# Films in these volcanic spaces

- ▶ In the Stromboli, the stromboli movie was recorded in 1950.
- ▶ Also, in the volcano ``vulcano`` the volcano movie wa recorded in 1950
- ▶ And the saga ``los ultims días de Pompeya``





# Paintings about volcanic zones

